

PipeChain - ReleaseNotes 2.3.0

2005-01-27

Preliminary

Table of Contents

1.1	New Server Admin Client	1
1.2	New Installation program	1
1.3	New Database driver.....	1
2.1	Before upgrading to PipeChain 2.3.....	2
2.2	Upgrade from version 2.2.2, 2.2.1, 2.2.0, 2.1.0, 2.0.0 and 2.0.1	2
	2.2.1. This must be done after upgrade from version 2.0.0 and 2.0.1	2
2.3	Upgrade from version 1.5	3
	2.3.1. This must be done before upgrade from 1.5.....	3
	2.3.2. This must be done after upgrading from 1.5	3
3.1	New functions	4
	3.1.1. Cancelling and deleting suggestions and deliveries.....	4
	3.1.2. Create replenishment orders in PipeChain from ERP.....	4
	3.1.3. Data Exchange of Delivery Agreement parameters to suppliers	4
	3.1.4. Delivery Unit Quantity	4
	3.1.5. Green Balance.....	5
	3.1.6. Editing of Delivery Agreements in Overview screens	5
	3.1.7. Limit Automatic Sending of Suggestions	5
	3.1.8. Logging of changed Delivery Agreement parameters.....	6
	3.1.9. Order Text Fields.....	6
	3.1.10. Product Filter used in Order screens	6
	3.1.11. Redesigned screens.....	6
	3.1.12. Total stock in PipeChain	6
	3.1.13. Warning for recipes when deleting products	6
3.2	Functions released in ServicePacks to 2.2.2	7
	3.2.1. CS33 Outbound Delivery Finished now as XML (SP01)	7
3.3	Correction of known errors	7
	3.3.1. Balance In & Out Deliveries Not Correct After Shipment (SP02)	7
	3.3.2. Order change don't take shipped quantity into account (SP02)	7
	3.3.3. Several suggestions at the same day and time (SP02)	7
	3.3.4. Customer Duration Meter Sort Changed After Own Bucket (SP03)	7

3.3.5. Order status not changed when delivery is confirmed (SP03)	8
3.3.6. Production Plan doesn't handle 0 quantity lines (SP03)	8
3.3.7. Reception registration not possible in status Arrival (SP03)	8
3.3.8. Split functionality not correct when LastShipment (SP03)	8
3.3.9. Cancel production order lines in screens (SP04)	8
3.3.10. Flow Sensitivity Changed by Product Definition Update (SP04)	8
3.3.11. Leave zero quantity after full shipment split (SP04)	9
3.3.12. No Change in Fixed Position Format Order Change CS42 (SP04)	9
3.3.13. No Order Change When Send And Change Stated on Supplier (SP04)	9
3.3.14. Side Inbound Delivery Fails If No Delivery Agreement (SP04)	9
3.3.15. Cancelling a suggestions triggers order change (SP05)	9
3.3.16. CS05 not sent after data exchange (SP05)	10
3.3.17. Sales Order Advice don't update when it's sent twice (SP05)	10
3.3.18. When defining a recipe line we can't key in any constant (SP05)	10
3.4 Transaction Changes XML	10
3.4.1. Product Definition (CS08) and Delivery Agreement (CS10)	10
3.4.2. Deprecated support of flatfile CS08, CS10, CS16, CS18 and PW10	10
4.1 New functions	11
4.1.1. Weekly Capacity Limits	11
4.2 Functions released in ServicePacks to 2.2.1	11
4.2.1. Improved creation and update of resource capacities	11
5.1 Functions released in ServicePacks to 2.2.2	12
5.1.1. Dynamic e-mail subject based on xml transaction content (SP05)	12
5.2 Correction of known errors	12
5.2.1. Using Converters on incoming SOAP messages	12
5.2.2. Receiver element has been put back (SP04)	12
6.1 New functions	13
6.1.1. New Database driver for SQL Server	13
6.1.2. New setup program	13
7.1 ServerAdmin client	14
7.1.1. Important upgrade information	14

7.1.2. Introduction.....	14
7.1.3. The Server Admin Client.....	16
7.1.4. Technical requirements	16
7.1.5. Main server controls.....	16

1 GENERAL INFORMATION

1.1 New Server Admin Client

A new way of accessing the server has been release already in earlier version in later Service Packs.

NOTE If you are not already familiar with the Server Admin client , please read section 7 carefully before upgrading to 2.3.0.

The Server Admin Client is part of a number of steps to make the PipeChain servers easier to monitor and administer. Later it will also be possible to run the Servers as separate services, one for each server. This new functionality will replace the ProcessLauncher in the future. It is already being evaluated at certain customer's. If you wish to participate in evaluating this functionality, please contact PipeChain AB.

1.2 New Installation program

These Release Notes are Preliminary as the Installer application is being changed. More information will be available shortly on the new installation process.

1.3 New Database driver

A new database driver will be used for accessing SQL Server. Read more in section 6.1.1.

2 UPGRADE TO VERSION 2.3

2.1 Before upgrading to PipeChain 2.3

If you are using Data Exchanges to other PipeChain servers you should verify that these use at least 2.1.0. Although the Data Exchanges probably works with previous versions of PipeChain, this is neither tested nor supported by PipeChain AB.

+ Finding Partners using old versions

You can find the Customers and Suppliers using older versions than 2.1.0 through the SQL query below:

```
SELECT 'Supplier' As BizNodeType, BND.PipeChainVersion, BND.BizNodeId,
BND.DelivAddressId, BND.Name, BND.Descr, BND.ContactPerson, BND.Phone, BND.Email
FROM BizNodeDef BND, SupplBizNode PBN
WHERE BND.BizNodeId = PBN.BizNodeId
AND BND.DelivAddressId = PBN.DelivAddressId
AND PBN.SupplType = 10
AND BND.PipeChainVersion < 210
```

UNION

```
SELECT 'Customer' As BizNodeType, BND.PipeChainVersion, BND.BizNodeId,
BND.DelivAddressId, BND.Name, BND.Descr, BND.ContactPerson, BND.Phone, BND.Email
FROM BizNodeDef BND, CustBizNode PBN
WHERE BND.BizNodeId = PBN.BizNodeId
AND BND.DelivAddressId = PBN.DelivAddressId
AND BND.BizNodeType = 30
AND BND.IsPipelineBiz = 1
AND BND.PipeChainVersion < 210
```

We strongly recommend that your partners use of at least 2.0.1 due to the change in warning levels in the Duration Meters. All companies using PipeChain with a valid yearly service agreement are entitled to free access to the latest version of the licensed modules.

WebAccess 2.2.1, 2.2.2 and 2.3 requires at least Internet Explorer 5.5 or at least Netscape 7.0. WebAccess works with Internet Explorer 5 and Netscape 6.0 but not optimal.

2.2 Upgrade from version 2.2.2, 2.2.1, 2.2.0, 2.1.0, 2.0.0 and 2.0.1

Run the setup program for version 2.3.

Important to remember during upgrade

- When running the setup program there's a step where the parameters for database access shall be entered. Check that these are correct by using the button **Check Access**.

2.2.1. This must be done after upgrade from version 2.0.0 and 2.0.1

- Start the background job "Update Duration Meters" from the Background Job Overview or Detail screen. (This requires system administrator privileges).

2.3 Upgrade from version 1.5

2.3.1. This must be done before upgrade from 1.5

1. You must confirm or cancel all deliver suggestions that are locked but not confirmed.
2. If there are locked but not confirmed suggestions these will disappear!
3. Important to remember during upgrade
4. When running the setup program there's a step where the parameters for database access shall be entered. Check that these are correct by using the button Check Access.

2.3.2. This must be done after upgrading from 1.5

- Update the fill rate in the Customer's *Market Buckets*: Go to the screen **Customer Market Bucket Overview**, right-click in the list and choose **Update All**. This must be performed as the fill-rate is set to zero at upgrade.

The following two actions must be taken after upgrade from version 1.5.0 for the DurationMeter's to show correct symbols, colors and values:

- Set opening and closing days and, if necessary, opening hours in the Supplier's calendar (the tab Calendar in the screen Supplier Detail).
- Start the background job "Update Duration Meters" from the Background Job Overview or Detail screen. (This requires system administrator privileges).

3 SUPPLY

3.1 New functions

3.1.1. Cancelling and deleting suggestions and deliveries

The suggestion detail screens now have cancel buttons. If you cancel a suggestion in the status "Suggestion" and "Locked" it is deleted. You can not cancel suggestions in the status "Sent to Order System".

It is recommended that users use the Cancel button rather than the delete button (the "red cross").

Whenever a user cancels or deletes a suggestion or a delivery a message is put into the MessageLog with the user's Name, the Status, Delivery Id, Product Id and Partner Id of the suggestion/delivery and whether it was deleted or cancelled.

3.1.2. Create replenishment orders in PipeChain from ERP

By using the new attribute in CS02 "CreateOrderLineIfMissing" order lines not created by PipeChain can now be created when the CS02 arrives in PipeChain. If the same order line is sent more than once with the same Sales Order Identifiers a new delivery will not be created. The order line with the same Sales Order Identifiers will be updated with the new values the second time it arrives and onwards.

The intention for the usage of this functionality is if you urgently need to ship something to a customer you should not have to create the order line first in PipeChain. It should be possible to create it directly in ERP and use the standard transactions between the ERP's and PipeChain.

The attribute should not be hard-coded into the CS02 transaction but rather be set dynamically if the above scenario should be supported and the PipeChain Delivery Identifiers (PipeChain Order Id's or DeliveryId) is missing for the current order line in the transaction.

3.1.3. Data Exchange of Delivery Agreement parameters to suppliers

The data exchange can now exchange delivery agreement parameters to suppliers from the customer's PipeChain. The supplier must first approve that these parameters may be updated by the customer in the Customer Detail screen. After a data exchange transferring the approval to the customer, the customer will be the one managing the parameters for all agreements.

3.1.4. Delivery Unit Quantity

The functionality of the Multi Unit Quantity has been split into two parts, with separate definitions, the first - the multiple unit quantity of the delivery suggestions - is defined as before and the second - the delivery unit quantity used in the LoadPlanner to optimize transportation - have been given a separate definition. It is now possible to define a pallet quantity and optimize transportation on pallet size without PipeChain rounding the suggestions to even pallets. These can instead be rounded on half pallets, layers or cartons, by defining a different multi unit quantity than the delivery unit quantity.

For users not using the LoadPlanner it is still possible to utilize the Delivery Unit Quantity as the Number of Delivery Units, the Delivery Unit Id and Delivery Unit Quantity is displayed in all delivery and suggestion screens in both the standard client and WebAccess client.

One Product can now have more than one possible Delivery Unit and each agreement has a default Delivery Unit. This must be one of the Delivery Units defined on the Product.

The Delivery Unit Id's and the number of units of the product on each Delivery Unit can be defined in the Product Definition transaction (CS08) or in the Own Bucket Detail screen.

3.1.5. Green Balance

A new parameter, Green Balance, can be used in the delivery agreement. The intention is to lower the amount of blue meters. If the number of units in stock is equal to or less than the Green Balance level the meter can not turn blue.

The Green Balance level is shown in the Inventory Graph as a green dotted line in the lower graph.

This new parameter can be defined in the Delivery Agreement screens or via transaction (CS08/CS10).

A normal usage of Green Balance would be to define the Green Balance to be equal to or relative to Minimum Delivery Quantity.

Example: If you always deliver full pallets and the demand is not equal to full pallets you will after a production run have a remaining quantity of less than a pallet. This will cause PipeChain to show blue meters if the next production run is later than the Max Time away. With the new parameter Green Balance defined as one pallet, any remaining parts of a pallet will be considered as "zero stock" and not cause a blue meter. Only stock levels above one pallet can give a blue meter.

Yellow and red warnings are used the same way as before.

3.1.6. Editing of Delivery Agreements in Overview screens

The Inbound and Outbound Delivery Agreement Overview screens are now opened for editing. The screens have more fields available and more sort orders.

New fields (versus 2.2.2): Use CT, [Green Balance](#), [Auto Send Min and Max Qty](#), Order Text 1-3.

New sort orders (versus 2.2.2): Green Balance, Min Deliv Qty, Multi Unit Demand, Multi Unit Qty, Customer's Product Id and Variant, Auto Send Min and Max Qty, Order Text 1-3.

Hint: If you want to edit one value for many agreements you can (after filtering/sorting the products you want to edit), after selecting the field you want to edit, change the value and press down arrow. This will save the change for the current row and move to the next row and highlight the same field for the next row.

3.1.7. Limit Automatic Sending of Suggestions

The automatic sending of orders can be limited to a minimum or maximum quantity limit in order to prevent very small and/or very large orders to be automatically sent to the ERP system.

Suggestion outside of these limits will get a specific status "On Hold" and must be managed manually. They will neither show up in the Customer Delivery Forecast nor in the FlowModel type "From Outbound Deliveries". The latter is to prevent outgoing delivery suggestions that are "On Hold" to trigger creation of inbound suggestions.

The upper and lower Limit to automatically send delivery suggestions are defined in the Agreement screens in the Advanced tab, via the Product Definition transaction (CS08) or via the Delivery Agreement transaction (CS10).

3.1.8. Logging of changed Delivery Agreement parameters

When a Delivery Agreement is changed, the change and who made the change will be put into the Message Log.

3.1.9. Order Text Fields

The Order Text fields in the Delivery Agreements are now visible in the Delivery and Delivery Suggestion Overview screens and in the Inbound and Outbound Deliveries tabs in the Own Bucket screen.

3.1.10. Product Filter used in Order screens

The current filter set by the user is now used in the Inbound and Outbound Order Detail screens for all the buttons in these screens. Only the products / order lines that are part of the current filter can be added / sent / requested / confirmed and shipped in the screens.

Note If there are more product / order lines that does not match the current filter setting, there will be no warning to the user that there may be more products / order lines that may need action.

3.1.11. Redesigned screens

The following screens have been redesigned in the standard client and in the WebAccess client to have a similar look:

Inbound Delivery Suggestion Detail
Inbound Delivery Detail
Outbound Delivery Suggestion Detail
Outbound Delivery Detail

3.1.12. Total stock in PipeChain

In the Own Bucket Detail screen the tab Market Bucket has been revised to better show how much and where stock is placed in the Supply Chain. This tab is also available in the Inventory Graph. The stock is shown in days, units and percentage split into:

- Inbound Confirmed
- Inbound Shipped
- Own Stock (excl. Outbound Confirmed)
- Outbound Confirmed
- Outbound Shipped and
- Customers Stock

The date and time all the stock, stock-in-transit and confirmed deliveries covers is also calculated. If there is only one outbound agreement these dates are calculated on the customer's demand. If there is more than one outbound agreement it is calculated based upon the current average consumption.

3.1.13. Warning for recipes when deleting products

If you try to delete a product that has a recipe or is a part of a recipe, the delete dialog will warn the user of this fact. If you still delete the product you must manually remove the recipe or the recipe lines for the product.

3.2 Functions released in ServicePacks to 2.2.2

3.2.1. CS33 Outbound Delivery Finished now as XML (SP01)

CS33 Outbound Delivery Finished is now also available in XML format. It uses the same XML schema as CS65 Inbound Receiving Finished.

The transaction is sent when an outbound delivery is finished.

3.3 Correction of known errors

3.3.1. Balance In & Out Deliveries Not Correct After Shipment (SP02)

If using Transport strategy in the delivery agreement there should be one and only one delivery per product for each transport. In a case with own flow model "From inbound orders" with period type "All-at-Once" we get multiple suggestions per product and day. The second suggestion represents the outflow one week ahead and is not to be delivered until next week. The outflow per day is less than 1.

The error is corrected. The cause was how computers handle floating point figures. Adding two decimal figures and then subtracting the sum doesn't always result in 0. In this case it resulted in a figure less than 0 so the demand date got too early. Instead of comparing with 0 the quantity is now compared to -0.0009.

3.3.2. Order change don't take shipped quantity into account (SP02)

The In & Out Deliveries tab in the Inventory Chart doesn't show correct Resulting balance if a deliveries has been shipped. The resulting balance is not affected by a shipped delivery as the own balance is already decreased with the shipped quantity.

Applies to sites with own balance strategy set to "Adjust on Shipping".

The error is corrected.

If the own balance adjustment strategy is set to "Adjust on Confirm" no confirmed outbound delivery is affecting the resulting balance in the table.

3.3.3. Several suggestions at the same day and time (SP02)

When a delivery has been split after a shipping and the customer demand is increased the new quantity for the confirmed delivery is too big. It also covers what is on the shipped delivery.

The algorithm is changed now so the shipped delivery is handled first and then the confirmed, which will be changed.

3.3.4. Customer Duration Meter Sort Changed After Own Bucket (SP03)

The default sorting in screen Customer Bucket Duration Meters is "Urgency" which means that red meters comes first. But after a visit in Own Bucket Detail the sorting in Customer Bucket Duration Meters the sorting is automatically changed to "Customer Id".

The sorting was automatically changed by the new tab "Customer Buckets". This has been changed now and the default sorting is "Urgency in all screens and grids for customer buckets. Columns for

outflow and shortage have been added to this grid. All sort alternatives are now available in all screens and grids for customer buckets.

3.3.5. Order status not changed when delivery is confirmed (SP03)

When the last outbound delivery/order line is confirmed the status on the corresponding outbound order should be changed to "Confirmed". This doesn't work if the delivery is confirmed with delivery ID.

The error has been corrected.

3.3.6. Production Plan doesn't handle 0 quantity lines (SP03)

The error message is not good if there is a line with DeliveryQuantity="0". The error is just "null".

Comments

These lines are now ignored if there is no corresponding existing line.

3.3.7. Reception registration not possible in status Arrival (SP03)

It's impossible to do a reception registration on an inbound delivery if there is another line on the same inbound order that is in status "Arrived".

This occurs only if the new CS45 transaction is used.

The error has been corrected.

3.3.8. Split functionality not correct when LastShipment (SP03)

When CS03 with SplitOrderLineOnPartialShipment = true and IsLastShipment = true is processed and the full quantity is not shipped a new delivery is created instead of shipping the delivery and lowering the delivery quantity. The SplitOrderLineOnPartialShipment-flag has a higher priority than the IsLastShipment-flag when it should be the other way around.

The error is corrected.

3.3.9. Cancel production order lines in screens (SP04)

Now it is possible to cancel inbound deliveries. There will be a record in finished inbound delivery for the cancelled delivery.

The cancellation can be done in detail, overview and grids showing inbound deliveries.

A message will be logged with supplier ID, product ID, delivery ID, delivery status and user name.

3.3.10. Flow Sensitivity Changed by Product Definition Update (SP04)

Outflow sensitivity is not changed to the value in the product definition transaction when the product exists. Its value is only copied from the transaction when the product is new.

The error is corrected.

The value is not changed if the flow sensitivity is not stated in the transaction. If the product is new the value is set to 0.05, on update it's not changed if it's not stated in the transaction.

3.3.11. Leave zero quantity after full shipment split (SP04)

The logic in the Despatch Advice processing is changed in the case where a partial shipment splits the delivery.

Before the delivery wasn't split if the all the delivery quantity was shipped even if the last shipment flag was set to false. Now this is changed so the delivery will only be fully shipped if the last shipment flag is set to true in the transaction. This means that there will be a delivery with quantity zero as long as the last shipment hasn't been performed. This delivery cannot be changed unless the quantity is changed.

It's not allowed any more to ship a delivery that already has been fully shipped.

The changes affect neither the non-splitting shipping nor the manual shipping.

Only the server is affected. The transaction layout isn't changed.

3.3.12. No Change in Fixed Position Format Order Change CS42 (SP04)

The change in the delivery that triggered the transaction was not reflected in the transaction since the suggested values were sent once again. Now it has been changed so the changed values are sent.

3.3.13. No Order Change When Send And Change Stated on Supplier (SP04)

We have stated Send Delivery Suggestions on the supplier to Automatic Sending and Change. The delivery agreement states "As specified in the supplier business screen". There is a confirmed delivery from that supplier with quantity 40 but even though the need has been increased the quantity is not changed. The shipment time is outside the frozen horizon.

Because the delivery agreements for a Production Supplier are not "Supplier Managed Inventory" the logics for order change looked at the Send Purchase Suggestions strategy, which was set to Manual and not editable because it's not applicable in this case.

The error is corrected.

3.3.14. Side Inbound Delivery Fails If No Delivery Agreement (SP04)

If there is no delivery agreement for a product and thereby no defined supplier for the product the button Generate Side Delivery in Own Bucket Detail doesn't work.

The error is corrected.

3.3.15. Cancelling a suggestions triggers order change (SP05)

When the cancel button was introduced on production order lines the order change transaction was sent even if the suggestion wasn't confirmed. Now the logics have been changed so that the order change is only sent if the order line is confirmed.

The order response is only sent if the order line is confirmed (purchase order lines: Sent to Purchase System or later).

The correction is applied both on inbound and outbound deliveries.

3.3.16. CS05 not sent after data exchange (SP05)

When a supplier has created deliveries for a customer these deliveries will be transferred in the next data exchange. For each new delivery there will be sent a CS05 on the customer side.

But sometimes the CS05 isn't sent, which causes problems in the goods reception.

The CS05 transaction is not sent for any of the deliveries if there among the deliveries was a delivery that was cancelled by the supplier prior to the data exchange.

The error is corrected.

3.3.17. Sales Order Advice don't update when it's sent twice (SP05)

When the sales order advice transaction is used it's recommended that the sales order is sent once again when the sales order has been updated in the ERP-system.

It's also possible to set arbitrary order type, but when the replenishment order type is used the old order isn't found so it's not updated. Instead a new order is created with a new line. The old order should have been found using the sales order ID.

The error is corrected. The existing order is updated when the same sales order is advised again.

3.3.18. When defining a recipe line we can't key in any constant (SP05)

When defining a recipe line we can not key in a recipe constant > 1 if the recipe factor ≤ 1 .

The error is corrected.

3.4 Transaction Changes XML

3.4.1. Product Definition (CS08) and Delivery Agreement (CS10)

The new parameters Green Balance, Minimum and Maximum Tolerance Quantity (for Automatic Sending of orders) can be defined via CS08 and CS10.

3.4.2. Deprecated support of flatfile CS08, CS10, CS16, CS18 and PW10

The transactions for defining products and agreements will no longer be supported in flat file format. The transactions are supported in XML format.

4 FLOWPRODUCTION

4.1 New functions

4.1.1. Weekly Capacity Limits

The capacity limits set on resources may be defined to be checked on a weekly basis as well as today's daily basis. This will be defined on a each resource in the Resource Detail screen. The functionality will be available in a ServicePack to 2.3.0.

In the Display All Shortages dialog, a new column is added for Capacity Check Period. The remaining Available Quantity will show either the daily or weekly remainder.

In the Planning Resource Allocations per Week/Day graphs, both ResCheck and Capacity Check Period is displayed. In the Day-graph, all day-bars change color when a weekly limit is exceeded.

4.2 Functions released in ServicePacks to 2.2.1

4.2.1. Improved creation and update of resource capacities

Resource capacities can now be mass-updated via transaction (FP59). It is also possible to see when a capacity was last updated and by whom.

4.2.1.1 Capacity editing

If the capacity is update via transaction the editing type is set to Automatic. If it is edited by a user it is set to Manual, and the UserId of the user who last edited the capacity is displayed.

A transaction trying to update a capacity that has been manually edited can result in two different results.

- If the capacity in the transaction is the same as the last manual edit the editing status is set to Automatic.
- If the capacity in the transaction is different from the last manual edit, the capacity will not be updated, the editing status will be set to Manual with Warning and a message will be put into the Message Log.

4.2.1.2 Transaction for creating and updating resource capacities (FP59)

A new transaction for creating and updating resources, FP59, is available from version 2.2.1, SP16. An Excel sheet to create the transactions is also available.

5 MACOM

5.1 Functions released in ServicePacks to 2.2.2

5.1.1. Dynamic e-mail subject based on xml transaction content (SP05)

The E-mail subject can contain data from the XML transaction being sent to the recipient. The dynamic data is fetched by finding the first attribute specified in an XPath.

Note: It is recommended that the e-mail channel used only sends one transaction type.

Syntax: Start of subject{XPATH:[xpath string goes here]}End of subject.

Example: To find the PipeChain Order Id in a PW05 message and use it in the subject, the XPath to find the PipeChain Order Id is:

/Message/Data/OrderResponses/OrderResponse/OrderLine/PipeChainOrderInfo/@PipeChainOrderId

The Send subject could look like this:

Order Response: Order Id

{XPATH:/Message/Data/OrderResponses/OrderResponse/OrderLine/PipeChainOrderInfo/@PipeChainOrderId} has been confirmed.

5.2 Correction of known errors

5.2.1. Using Converters on incoming SOAP messages

The implementation of the SOAP servlet in versions before 2.3 made messages sent via the servlet to bypass the converter and were put directly into the database.

The error has been corrected and the functionality has been slightly altered.

Note! SOAP messages sent to PipeChain must now have a SOAP channel as the receiving channel. The Transaction Receiver must also be running in order for PipeChain to receive messages. If the Transaction Receiver is not running the SOAP servlet will return the response code “500” to the sender.

With this new functionality it is now also possible to utilize the Debug Log for incoming SOAP messages to catch the unconverted messages.

5.2.2. Receiver element has been put back (SP04)

The receiver element in all XML transactions was not present in previous service packs for version 2.2.2 if there was no data to put in ReceiverId. Now it's back even if ReceiverId is empty.

6 PLATFORM

6.1 New functions

6.1.1. New Database driver for SQL Server

PipeChain will from version 2.3.0 stop supporting and shipping the SPRINTA driver and move to DataDirect's Connect for JDBC. Currently this driver will be used for SQL Server databases but will also in the future be used for Oracle and potentially more databases.

The information below is only needed if you update PipeChain without using PipeChainSetup.

The new database driver consists of 3 new files, CDbase_034014.jar, CDsqlserver_034014.jar and CDutil_034014.jar. These needs to be a part of the -Djava.class.path= string in the inp-file of the server.

The new connect strings used in the properties files are:

```
se.masystem.pipeline.server.dbtype = DDC:MSS
se.masystem.pipeline.server.dbpar = DDC:machine:port:database[:instancename]
```

6.1.2. New setup program

The current installation program, InstallAnywhere, has been changed to Install for Java. More information on the consequences will be described in the final release notes.

7 SERVER ADMIN CLIENT

7.1 ServerAdmin client

7.1.1. Important upgrade information

The first time a PipeChain Server with the Server Admin client is launched the user "sa" is upgraded to a new user category, Server Administrator. If there is no user "sa", this user will be created with a blank password.

After launching the server, log on to PipeChain with user id "sa" and upgrade the users who should be Server Administrators in this PipeChain Server.

If the password for "sa" is blank we recommend that you set a password for the user "sa". We also recommend, if you plan to keep the user "sa", that you change the Name to "Server Administrator".

7.1.2. Introduction

The Server Admin client accesses the PipeChain server's interface directly from any computer running the PipeChain standard client. Through the Server Admin client the same operations can be made as through the PipeChain's server application window.

As it is possible to remotely administer the PipeChain server application through the standard client it is possible to hide the PipeChain server window on the desktop of the physical server running the PipeChain server. Hiding the window is made by setting the property `se.masystem.pipeline.server.window` to `false` in the `server.properties` file.

It is required that the user is logged on as a Server Administrator to be allowed to launch the Server Admin client.

The Server Admin client is launched through the View menu in the PipeChain standard client.

+ View screenshot - Launching the Client

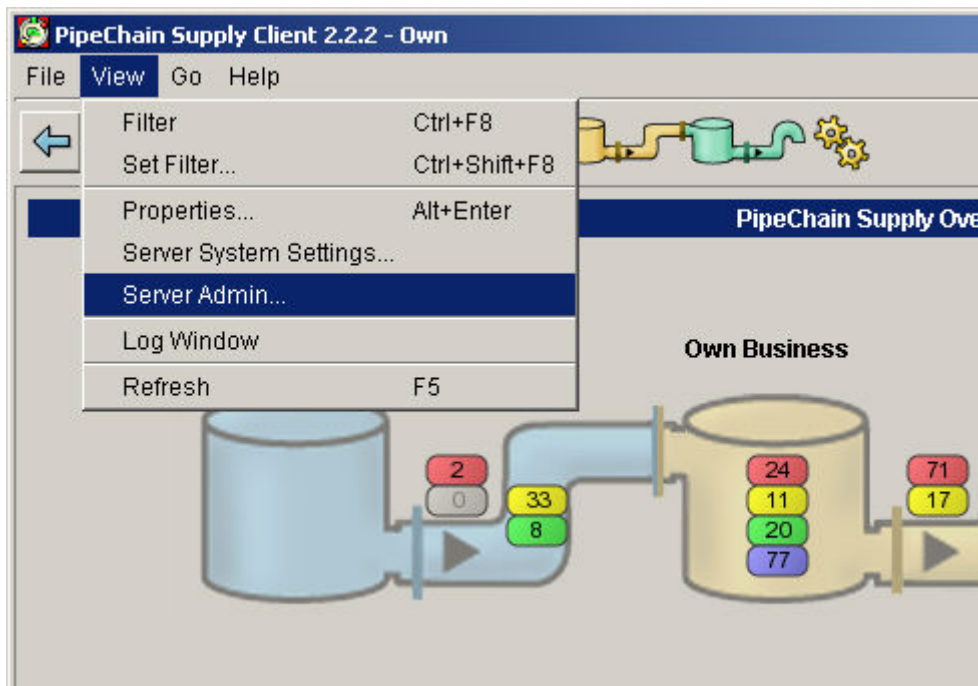


Figure: Launching the Server Admin client.

+ View screenshot - Server Admin client

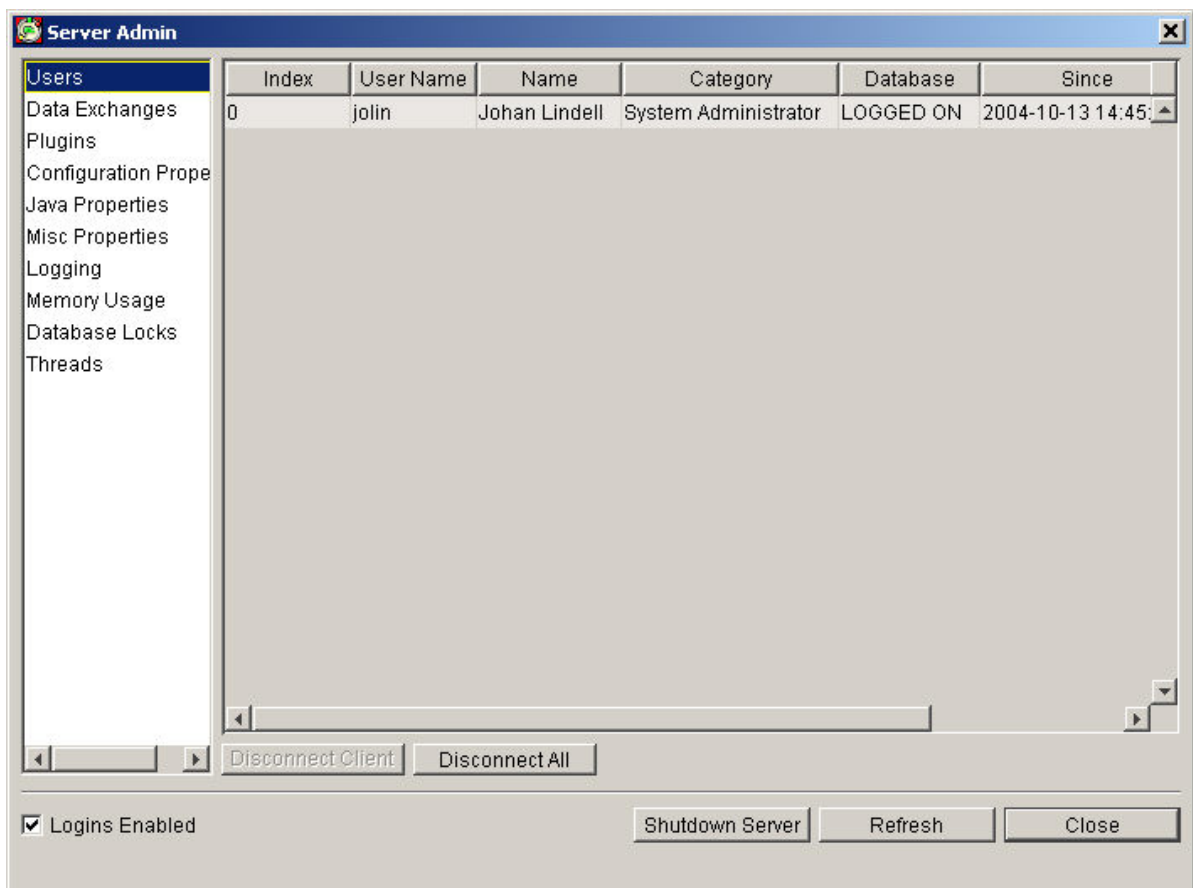


Figure: The Server Admin client window.

7.1.3. The Server Admin Client

The client consists of three parts: The screen selector to the left, the screens to the right and the main server controls at the bottom.

7.1.4. Technical requirements

NOTE If you are applying a Service Pack and not performing a new installation you need to make some changes to the Client.lax-files (For Supply, SupplyClient.lax and for FlowProduction, FloproClient.lax).

At the end of the row that starts with lax.class.path you should add the following (copy and paste to make sure it is correct, and remove any spaces that may have been copied):

;`../lib/xmlParserAPIs230.jar;../lib/xercesImpl230.jar`

in order to load these files to the client application. These files are necessary to start the ServerAdmin client.

7.1.5. Main server controls

Logins Enabled - when this checkbox is unchecked users may not log on to this PipeChain server. Also other PipeChain servers are not allowed to log on to perform Data Exchanges. When checked users may log on.

NOTE If you uncheck Logins Enabled and close the Client, you can not log on to the server. You must either access the server on the console of the server or restart the server.

Shutdown Server - Shuts down the server. There are three ways of shutting down the server:

1. Stopping the background jobs when they are finished. This is the recommended shut down method.
2. Stopping the background jobs when they are at a safe point. (Some of the background jobs will not be continued when the server is restarted. This may result in that some parts of PipeChain will not be updated properly)
3. Stopping the background jobs immediately.

When the server is restarted you are not automatically reconnected with the Server Admin client. You need to close the Server Admin client, redo the login through the PipeChain client and then restart the Server Admin client.

Refresh - Refreshes the screen content. F5 can also be used to refresh the screen.

Close - Closes the Server Admin client.

7.1.5.1 + Users

Through this screen you can see which users are logged on.

It is possible to disconnect a client or all clients through the buttons in the bottom part of the screen.

7.1.5.2 + DataExchanges

Through this screen you can see which data exchanges are running.

It is possible to disconnect a data exchange or all data exchanges through the buttons in the bottom part of the screen.

7.1.5.3 + Plugins

Through this screen you can see which plugins are loaded in PipeChain. If converter handles both incoming and outgoing transactions they will appear both at the top "MACom Receiver Converters" and at the bottom "MACom Sender Converters".

7.1.5.4 + Misc. properties

In this screen the most important properties of the server are listed.

Property Filename - the name of the property file used to launch this server. It is located in the server's bin directory.

Client Connection Server Resource - the rmi address of the PipeChain server used for the clients to log on to this server.

Remote Data Exchange Server Resource - the rmi address of the PipeChain server used for other PipeChain servers to log on to this server and perform data exchanges.

Database Connection Parameters - the database parameters used to connect to the PipeChain database. Default is [Driver]:[Server]:[Port]:[Database]

PipeChain.server.version - The main version of the server.

Example: 2.2.2

PipeChain.server.build - The service pack version of the server. The first value is the service pack of this server.

Example: 14.0.0 should be interpreted as ServicePack 14

7.1.5.5 + Configuration properties

In this screen you will find the PipeChain specific properties.

7.1.5.6 + Java properties

In this screen you will find the Java specific properties.

7.1.5.7 + Logging

In this screen you can control what is put in to the log file of this PipeChain server.

These setting should be active in normal conditions:

- Errors
- Exceptions

These setting should only be changed for debugging only

- Timing
- Users
- Debugs

7.1.5.8 + Memory usage

This screen shows the memory usage of the PipeChain server. It is used for trouble shooting only.

7.1.5.9 + Locks

This screen shows the locks in the PipeChain server. It is used for trouble shooting only.

7.1.5.10 + Threads

This screen shows the threads used by the PipeChain server. It is used for trouble shooting only.