

# PipeChain Release Notes 4.3.0

<b>1</b>	<b>WELCOME .....</b>	<b>1</b>
<b>2</b>	<b>UPGRADE TO VERSION 4.3.0 .....</b>	<b>3</b>
	<b>Actions before upgrading to PipeChain 4.3.0 .....</b>	<b>3</b>
	<b>Actions after upgraded to PipeChain 4.3.0. ....</b>	<b>3</b>
<b>3</b>	<b>RELEASE NOTES PIPECHAIN 4.3 .....</b>	<b>5</b>
	<b>New Functions .....</b>	<b>5</b>
	Supply: Forcast Profile .....	5
	Transactions are now compatible with EDIFACT .....	7
	WebShop: Enhancements (SP03) .....	9
	Supply: Filter deliveries (SP15) .....	9
	Platform: Change site automatically when moving from business screens to site screens. (SP10).....	9
	Supply: Possible to create suggestions from Inbound Delivery Suggestion Detail screen and from Inbound Delivery Detail screen (SP24) .....	9
	Supply: New button for cancelling reception registrations (SP06) .....	10
	Supply: New buttons for cancel shipping and cancel arrival (SP16).....	10
	Supply: Show history out flow from Supplier/Detail/Total Outflow Tab (SP10).....	11
	Supply: New column for one year demand in Total Outflow tab screen Supplier Detail. (SP17) .....	11
	WebAccess: Change reception time for whole order (SP10) .....	11
	Supply: Goods Reception with invoice number (SP12).....	12
	Supply: Calendar filter (SP15).....	13
	Supply: New colors and tooltip for Supplier Detail/History Delivery Plan (SP10) .....	13
	WebEDI: Price List enhancements and corrections (SP02) .....	13
	Analyzer: Database parameters are moved to the Business object.....	13
	Supply: Repeated suggestion generation for customers having PipeChain Supply (SP13).....	13
	Supply: Added new column for one year demand quantity in screen Supplier Detail/Outflow (SP13) .....	13
	WebAccess: Print Inventory Chart .....	13
	Supply: Print Inventory Chart (SP11).....	14
	Platform: Include headers in print screen (SP11).....	14
	MACom: Log who started and stopped processor (SP06) .....	14
	Supply: Log when a Finished Delivery is deleted manually (SP06) .....	14
	WebEDI: Automatic recalculation of reception time (SP07) .....	14
	Supply: More fields open for input when creating new delivery in Inbound Delivery Detail screen (SP17) .....	14
	Supply: New columns Min Deliv Qty and Max Deliv Qty added in screen Own Bucket Detail/Inbound Deliveries (SP17) .....	14
	Supply: Delivery Plan History (SP12) .....	15
	Supply: Information logging for too early shipping time (SP17).....	15
	Supply: Managed Inventory logging when changed (SP17) .....	15
	Supply: Own Bucket Detail / Multiline Notes text (SP15) .....	15
	MACom: Added timeout value 30 sec for email server connections (SP18)....	15

Supply: Filter optimization for flow models (SP10).....	15
Supply: Site in Supplier / WebUsers .....	16
WebEDI: Purchase Order Report-Shipment time (SP22) .....	16
Supply: New columns for Backlog and Transit Quantity in demand history screen (SP24) .....	16
Supply: New attributes for Analyzer in Own Bucket Detail screen (SP25).....	16
Supply: Repeated suggestion generation for customers having PipeChain Supply (SP13).....	16
Platform: Added business, site info and selected tab title in list printing (SP24) 16	
Supply: Add product id in message shown when deleting delivery (SP06).....	16
Supply: Check of Deliver Agreement when processing CS06 (SP06).....	16
Supply: WebAccess Partners list sorting (SP17).....	16
Supply: Updatable Invoice No and Container No in screen Inbound Delivery detail tab Order (SP17) .....	17
Supply: Possible to rename Sales Order Id and Sub Order ID and make these field editable (SP17) .....	17
WebEDI: Price List Changes (SP04) .....	17
Supply: Reception registration possible with blank supplier id (SP10).....	17
Supply: Keep product when moving between History tab and Total Outflow tab (SP17) 17	
LoadPlanner: Load Capacity is always presented with 3 decimals (SP16) .....	17
Supply: New Product Certificate (SP20).....	17
<b>Corrections .....</b>	<b>17</b>
Supply: Namespace in XML messages (SP07) .....	17
MACom: Style sheets (xsl-files) are now updated to support 4.3.0 transactions 18	
Supply: Updated ConfirmedQty2 after manual changed quantity in Inbound Delivery Detail (SP17).....	18
Supply: Corrections in Goods reception transaction (SP10).....	18
Supply: Inbound Partner Agreement Correction (SP05).....	18
Supply: CS34 Delivery Suggestion Request not functioning (SP06).....	19
Supply: Incorrect Checkbox "Critical Time" in delivery agreement (SP06).....	19
Supply: Thread deadlock problem (SP10).....	19
Supply: Expect Despatch Advise and Expect Receipt Advise were reset (SP17) 19	
Platform: Can't enter Domain Configuration in User Detail (SP06) .....	19
FP: Error corrected: when scheduling with "Find First Possible Shipping Day" and user has his own "Date Format". (SP07) .....	19
FP: New combination of "Find First Possible Shipping Date" and "Display All Shortages" (SP07).....	19
Shipping Documents: Related invoice in Remittans Advice screen (SP08) .....	19
MACom: New property for XML name space aware (SP09).....	20
Supply: Error in inventory chart corrected .....	20
Supply: Updating Inbound Delivery Detail (SP11).....	20
WebEdi: Invoice function when delivered quantity is 0 (SP12).....	20
Supply: Reading Taxes from product definition or delivery agreement transaction (SP12).....	20

Supply: CS80 Invoice message corrected .....	20
Supply: Transaction conflict in CS02 with balance update and SplitOrderLineOnPartialShipment (SP13) .....	20
Supply: Order status update (SP13) .....	20
Supply: Corrected error on data exchange of reception registrations (SP13.2) 20	
Analyzer: FlowPeriodDay SQL may fail if multiple FlowPeriod records with the same StartDate (SP14) .....	20
Supply: Corrected error on data exchange of reception registrations (SP15) .	20
MACom: Accepts fractional seconds when parsing XML dates (SP15) .....	20
Supply: New Messages when supplier meter becomes blue (SP06) .....	21
Supply: Inbound Delivery performance (SP17).....	21
MACom: Could not change polling interval on a FTP channel (SP17) .....	21
WebEDI: Error when creating invoice (SP18) .....	21
Analyzer: Groups use business key in stead of Site key (SP18) .....	21
Supply: Corrected database script for upgrade and new installation (SP19) ..	21
Supply: Correction in the background job Automatic Receipt (SP19) .....	22
Supply: Correction when handling Partner Agreement (SP19) .....	22
MACom: SOAP Message Keeper (SP20) .....	22
Supply: Missing Process Config (SP20).....	22
Analyzer: Supplier and Customer groups are saved per Business (SP20) .....	22
WebShop: Product Search Dimensions (SP21) .....	22
Supply: Product Attributes Length Width and Height (SP22) .....	22
Supply: Init Duration and Resulting Duration was not calculated correctly when several deliveries have the same receipt time. (SP22).....	23
Supply: SOAP Message Keeper using Sender information (SP23).....	23
Analyzer: Suppliers/Customers in the Analyzer was not updated after the Partner Agreement was removed.....	23
Supply: Deliveries with too large quantities was created just before closing days (SP24).....	23
Supply: No warning on shipment time in Inbound Delivery Overview (SP25)23	
Supply: Delievries with too large quantites was created just before closing days (SP25) 23	
MACom: Files with with byte order mark now handled for input files. ....	23
Platform: Business Restricted Users can't see users from other businesses any more 24	
MACom: Some attributes in the Notification mail should not always be displayed.....	24

# **1 WELCOME**

---

PipeChain is a software system that automates the flow of goods between companies, in production, between production and sales within a company.

Website: [www.pipechain.com](http://www.pipechain.com)

Copyright protects all information in this document. You must have prior written permission from PipeChain AB, Lund, Sweden to electronically or mechanically copy, duplicate, reproduce, photocopy, print, record, transmit, or translate any part of this document to persons not using PipeChain.

PipeChain, Duration Meter (name and layout), and Market Meter (name and layout) are trademarks of PipeChain AB. Microsoft, Windows, SQL Server, and Excel are trademarks of the Microsoft Corporation. Oracle is a trademark of the Oracle Corporation. All other trademarks mentioned in this publication are the property of their respective owners in their respective countries.

## **NOTICE**

Information in this document is subject to change without notice.



## 2 UPGRADE TO VERSION 4.3.0

---

Here are actions for what to do before and after installation of PipeChain 4.3.0. Document describing how to install PipeChain 4.3.0 can be found at Customer login at [www.pipechain.com - Flow on demand](http://www.pipechain.com - Flow on demand)

### Actions before upgrading to PipeChain 4.3.0

---

Before upgrading to PipeChain 4.3.0 from a previous version than 4.2, please follow the instructions in release notes for all previous releases of PipeChain that you need to check. See [www.pipechain.com](http://www.pipechain.com) for earlier release notes.

#### 1. Important Database Installation Change

There are new default passwords for database users 'PipeChainExec' and 'PipeChainRead'. The new passwords conform to Microsoft SQL Server 2005's rules for password complexity. This will affect you if

- you are upgrading your PipeChain to 4.3.0 from an earlier version, and your database already contains a login called 'PipeChainExec'.
- your PipeChain Server uses SQL Server Authentication to connect the user 'PipeChainExec'
- you'd like to use the new PipeChainServer.properties configuration file (located in the \bin folder) that ships with version 4.3.0

If all these conditions are met, you need to check your PipeChainServer.properties configuration file, and make sure that the properties:

- se.masystem.pipeline.server.dbuser
- se.masystem.pipeline.server.dbpassword

match the user that is defined in your database

### Actions after upgraded to PipeChain 4.3.0.

---

1. All transactions that are sent out through style sheets must be update to transaction releaser number 4.3.0 (or higher).

Please change field Release Number in screen Channel-Transaction Detail to 4.3.0 for following transactions if these transaction are used and sent by mail trough PipeChains style sheets:

CS01 Outbound Orders

CS42 Outbound Order Change

CS71 Production Requisitions

EVNT Event

MP01 Notification Mail

MP03 Reminder Mail

MS02 Deviation Mail

PW05 Outbound Order responses

If you have customized these style sheets an alternative solution could be to keep the old style sheets and don't change transaction release number. Style sheets (xsl-files) is found under installaion in folder ..\plugins\xslt

All channels senders must be restarted after updating these style sheets.

2. If you do not use PipeChain Analyzer, no action is needed.  
If a customer has run PipeChain version 4.1.0 or 4.2.0 SP00-SP17, there will be superfluous groups in the Analyzer database, as well as Products/Businesses pointing to them.  
This is handled by running a SQL-script provided by PipeChain AB. Note that there will be no actual problem unless groups are used in conjunction with the "Business Node with Sites" dimension. Please contact Connect PipeChain AB if this SQL-script is needed.
3. If you do not use PipeChain Analyzer, no action is needed.  
If you use PipeChain Analyzer, copy the string values of the properties below into the corresponding fields in the Business Detail screen.  
se.masystem.analyzer.dbtype =  
se.masystem.analyzer.dbpar =  
se.masystem.analyzer.dbuser =  
se.masystem.analyzer.dbpassword =  
se.masystem.analyzer.dbprefix.primary = (renamed to "PipeChain DB Prefix")  
se.masystem.analyzer.dbprefix.secondary = (renamed to "Analyzer DB Prefix")
4. New Product Certificate (SP20)  
The PipeChain Supply is signed with a new certificate on 2009-02-03. On the PipeChain server the contents of the directory ..\jre\lib\ext\ must be upgraded. If you don't install PipeChain with the installation kit, make sure that the all files in this folder contain the latest files.
5. Make sure that expect invoice and expect receipt advice are correct. If automatic receipt is not wanted, make sure expect receipt advice is checked. See [Finishing of order lines/inbound deliveries](#)



### 3 RELEASE NOTES PIPECHAIN 4.3

Release notes is a list of all new functions and corrections made in PipeChain 4.3.0. They also include all new functions and corrections delivered in service packs in PipeChain 4.2.0. If the item is delivered in a service pack, it's marked with service pack number (SPxx).

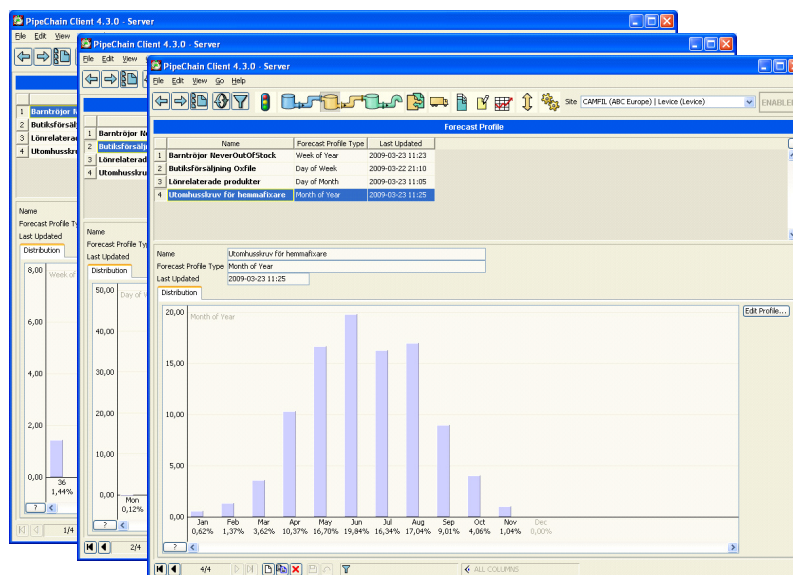
## New Functions

The most important and major new function are in placed first in this chapter

### Supply: Forecast Profile

It's now possible to create own forecasts in PipeChain. The forecast is build up with forecast profiles that can be created in the new screen Forecast Profiles (found under yellow tank menu).

#### Profiles



**PipeChain**  
flow on demand

### New Screen “Forecast Profile”

The screen is found in the “own” segment (yellow tank) in group OwnFlow Model.

The forecast profiles are created and maintained in this screen and are used to create flow models. Each profile has its own name and type. Forecast type can be one of following:

- Day of Week  
In the profile you can divide the percentage demand over the week days. Note ISO week are uses, see description bellow.
- Day of Month  
In the profile you can divide the percentage demand over all days In a Month .
- Week of Year  
In the profile you can divide the percentage demand over all weeks in a Year. Note ISO week are used, see description bellow.
- Month of Year  
In the profile you can divide the percentage demand over all months in a Year.

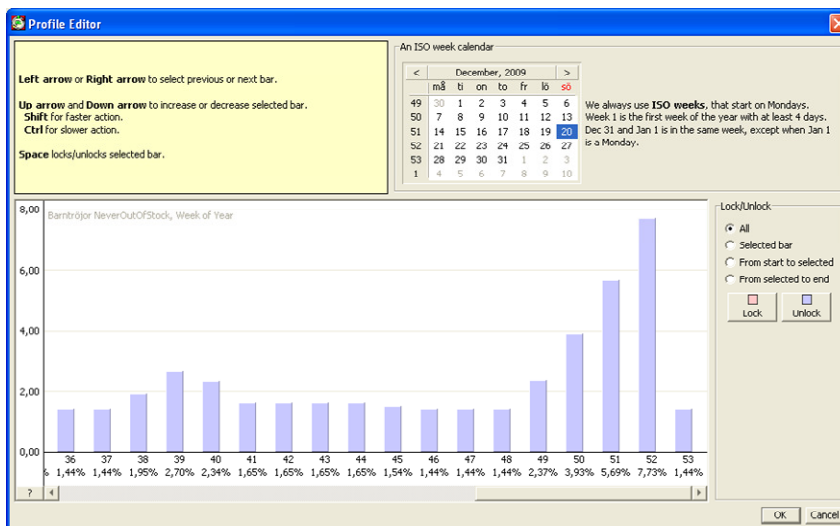
Description of ISO-week

- First day in week is always Monday
- Week number 1 is the first week that contains 4 days or more, or described in another way, the first week in the new year that contains the first Thursday.
- 31: e December and 1: e January is in the same week, if not 1: e January is a Monday. This means that 31: e December can be in week number 1 and 1: e January can be in week 52 or 53.

As help for users not used to ISO-weeks there is a calendar with ISO weeks in the Profile Editor.

When you create a new profile you will start with a profile that every day, week or month has equal percentage. To change the default division, push the button “Edit profiles”. In the edit windows you can find an instruction on how to adjust the profile.

### Edit profiles



**PipeChain**  
flow on demand

### ***Apply Forecast Profile to Flow Model in screen “Own Flow Model detail” and Customer flow model detail”***

There is a new Update Mode called "Generate Every Night from Forecast Parameters". A new tab “ForeCast Parameters” will be enabled if choosing this new Update Mode. Parameters in this tab will affect how flow models are created and updated buy the night job

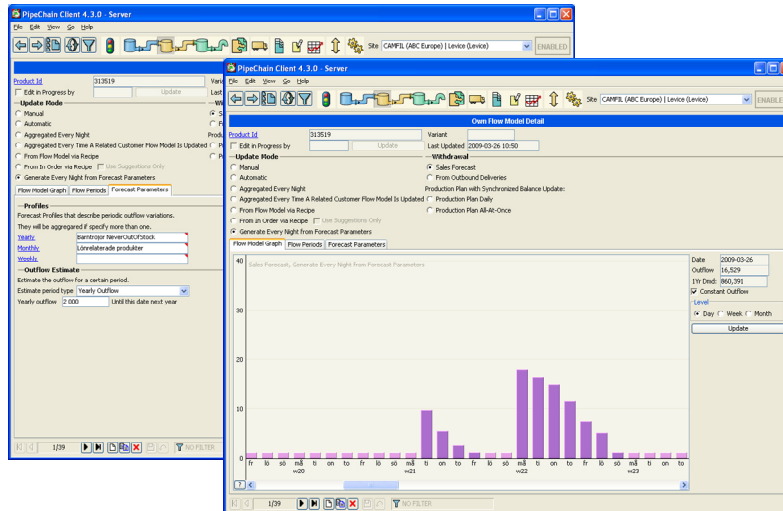
#### ***Forecast Parameters:***

#### ***Profiles (Yearly, Monthly, Weekly)***

Here you can apply forecast profiles to build up the flow model. You don’t have to enter more then one type of forecast profile type, but if you do, then will forecast of different types be accumulated. Leaving the profile type “weekly” empty means that there is now significant difference in outflow for between days in a week.

Note that the site calendar will always be used to determine if a day is closed or not. A closed day will have no outflow regardless of forecast profile data.

### Combination of several profiles types gives a more detailed flow model



**PipeChain**  
flow on demand

### Outflow Estimate

Choose of source for estimated outflow. The estimated outflow is used together with forecast profiles to create the flow model. Following estimated outflow sources can be chosen:

- Use Flow Meter

The average outflow from Flow Meter for the last days will be used as the estimated outflow.

- Yearly Outflow

Input of yearly estimated outflow. Here could the estimated outflow be entered for period: today and one year ahead.

- General Period

Same as Yearly Outflow, but here you can decide the period length.

### Generate Now...

New flow periods will be generated when pressing this button. This if not wanting to wait for the night job to create or update the flow model.

### Supply: Transactions are now compatible with EDIFACT

The PipeChain XML format has been extended to better support Traditional Order Management (TOM) as well as Vendor Managed Inventory (VMI). The following transactions had been made compatible with the UN/EDIFACT 1997A standard

- EDIFACT 1997A compatibility with the following transactions; ORDERS, ORDRSP, DELFOR, DESADV, RECADV for both VMI and traditional order management.
- Additional attributes for order and delivery handling as prices and currencies, the ability to show and include data as contact persons and documents references in screens and transactions, customization data, and much more.
- PurchaseOrders can now be automatically updated.

Updated transactions are:

- CS01
- CS02
- CS03
- CS05
- CS06
- CS21
- CS40
- CS41
- PW01
- PW05
- PW40

### **Supply: PipeChain GUSI Converter**

Ever since 2006, PipeChain has supported the GUSI process model and GS1 messages. PipeChain's GUSI converter is a lightweight plug-in for the PipeChain Supply software that converts the GS1 XML messages to PipeChain XML format, allowing for integration with any system that uses the GUSI/GS1 standard.

The latest GSI version supported is version 2.3. The following messages are currently supported by the converter:

- Despatch Advice
- Goods Requirement
- Inventory Activity/Inventory Status
- MultiShipment Order
- Order Response
- Receipt Advice
- Replenishment Proposal
- Replenishment Request

The messages and processes implemented supports both Vendor Managed Inventory (VMI) order management, as well as Traditional Order Management (TOM). A number of PipeChain customers have this converter in their supply chain; Augustin, Hepack, Unilever, Smurfit and Nestlé to name a few.

To use the converter software with the PipeChain Supply software, only three simple steps are needed:

1. Obtain the converter plug-in and place it in a directory on your server
2. Create a PipeChain supply channel and snap-in the plug-in.
3. Start the channel

Observe that no software installation process is needed. The plug-in can be made in a "hot" condition – this means that you can start using the plug-in on a server without having to shut it down first.

### **Additional Reading**

For more information, please refer to the PipeChain GUSI Converter documentation.

**WebShop: Enhancements (SP03)**

- Transactions to be logged in the message log
- Original requested delivery date is saved
- Request History Snapshot column
- Connecting customer specific with public catalogue.
- Smart Change Request
- Change delivery location sort order
- Smart Change order confirmation
- Delivery unit type added to the WebShop pages.
- New WebShop settings:
- New entries used in the PipeChainServer.properties on the PipeChain server side
  - # Set the following Analyzer event logging flag to true if the you do really need that
  - # since it causes a certain performance punishment for the web page
  - # The internal default value is false which means no logging unless you explicitly set it to true.
  - se.masystem.webshop.baskettemplate.eventlogging=false
  - se.masystem.webshop.productsearch.eventlogging=false
  - se.masystem.webshop.productcategory.eventlogging=false

**Supply: Filter deliveries (SP15)**

Screens displaying deliveries can now filter many delivery properties, such as Delivery Type, Delivery Status, Order Id and Line, Shipment Time, Receipt Time and Quantity.

**Platform: Change site automatically when moving from business screens to site screens. (SP10)**

Screens on business level are today only supplier screens/tabs (i.e. Screen Supplier/Duration Meters), but could in the future also be customer screen/tabs. These business level screens are displaying data from several sites. It's now possible to change selected site automatically when going from these business level screens to a screen on site level when the site for the screen is different than selected site. Context on business level such as supplier and customer are kept when moving to the new site. A popup dialog is displayed with a question to change site or not.

The visited screens history, manifested by the BACK and FORWARD buttons in the PipeChain client, is now kept when changing site. It also includes the site the screen was visited in, so that pressing BACK or FORWARD will not only take you to the screen, but also to the site the screen was visited in. The buttons' tool tip list the visited site when other than the current site.

When changing site, the client attempts to display the same record that was displayed last time the site was visited.

**Supply: Possible to create suggestions from Inbound Delivery Suggestion Detail screen and from Inbound Delivery Detail screen (SP24)**

Made it possible to create suggestions from Inbound Delivery Suggestion Detail screen and from Inbound Delivery Detail screen by using the "new" button. Before it was only possible to create deliveries not suggestions, but now is a suggestion created if the shipping time is outside confirmation margin.

**Supply: Finishing of order lines/inbound deliveries**

Order lines are now automatically finished if

- Receipt advice is not expected and receipt time is passed
- Invoice is expected and the order line is not invoiced

These flags are configured in the Process Configuration tab in the inbound partner agreement.

The job doing this is called Automatic Receipt. The job is scheduled on site level and should be run before the night jobs (including Supply Database Cleanup).

Order lines are also finished when they are received with a Receipt advice from the customer.

Finished order lines are shown in a new tab in Order detail.

If automatic receipt is not wanted, make sure expect receipt advice is checked or the job Automatic Receipt is disabled.

### ***Finishing of orders***

Orders are now automatically finished if

- There are no order lines on the order (all are finished)
- Invoice is expected and the order is not invoiced

Finished orders are shown in a new screen.

The job doing the finishing is called Supply Database Cleanup. The job is scheduled as a night job.

### ***Cleanup of Finished Orders and Finished Order lines***

Finished Orders and Finished Order lines are deleted a number of workdays after they are finished. The number of workdays can be specified specially for Finished Orders and Finished Order lines with selected property 1410. If not 1410 is defined the general history life time in own site is used. See installations actions on [Actions after upgraded to PipeChain 4.3.0.](#)

### **Supply: New button for cancelling reception registrations (SP06)**

A new button "Cancel Reception..." is now introduced in screen Inbound Delivery Detail and Finished Inbound Delivery Detail. The cancel function could also be activated from overview screens. This button will do cancel for all reception registrations for actual delivery. The delivery quantities "Received" and "Remaining" will be updated according to reception quantities and the bucket balance will be increased. The cancel will also send a CS66 transaction to the DELFOR converter that will decrease the accumulated received quantity.

The status for the delivery will be set to:

- Shipped if shipped quantity is greater than zero
- Confirmed if the shipped quantity is zero.

The user must have Operative privilege to use the Cancel Reception function, this is for both Inbound Delivery and Finished Inbound Delivery screens. The user must have Site Administrator privilege to use the delete button. Before this change the delete button for finished deliveries only required Configuring privilege.

### **Supply: New buttons for cancel shipping and cancel arrival (SP16)**

Two new buttons "Cancel Shipping" and "Cancel Arrival" are added in screen Inbound Delivery Detail tab Advanced. The old buttons for cancel: Cancel Delivery and Cancel Reception are also moved to the Advanced tab. The user must have at least Site Administrator privilege to use these buttons accept for

- Cancel delivery. The cancel buttons have following function:
- Cancel Delivery. Change delivery status to Cancel. Can only be used for deliveries of type Purchase Order or Production and if status is Suggestion, Locked or Confirmed
- Cancel Shipping. Change status back to Confirmed or Suggestion. Can only be used if status is Partly Shipped or Shipped.

- Cancel Arrival. Change status back to Shipped, Partly Shipped or Confirmed. Can only be used if status is Arrival. A new reception Registration row with quantity equal the negative accumulated arrival quantity will be created.
- Cancel Reception. Change status back to Arrival, Shipped, Partly Shipped or Confirmed. Can only be used if status is Partly Received or Received (Finished)  
A tool tips is added in these buttons telling what status the cancel will be after cancel. If shipment cancel is done on a delivery that is created during split then it's the delivery merged with it "parent" again. But this is only done if "parent" still exist and is not changed. Merge is not done during Arrival cancel. A message is created in Message Log when a cancel is performed by user.
- Text Id 110143: Shipping was cancelled on Inbound Delivery from supplier "1099" "" bucket "20742703" "" (Delivery Id "vpwtsde14222588") by "User sa".
- Text Id 110144: Arrival was cancelled on Inbound Delivery from supplier "1099" "" bucket "20742703" "" (Delivery Id "vpwtsde14222588") by "User sa".
- Text Id 110145: Reception was cancelled on Inbound Delivery from supplier "1099" "" bucket "20742703" "" (Delivery Id "vpwtsde14222588") by "User sa".

**Supply: Show history out flow from Supplier/Detail/Total Outflow Tab (SP10)**

Today is Tab Outflow showing current demands from the latest flow model for this supplier and product. A new field "History SnapShot Time" is added with a calendar to select a day. By selecting different days could demand from history be displayed in the Tab Outflow. Current demands will be displayed if this field is empty.

PipeChain will search for the first demand plans with snap shot time before or equal to select "History SnapShot Time" including selected day. If not found any plans for selected day or previous days, then will PipeChain search for days after selected day. The user can also add a specific time of day to search for, the logic is the same as when searching with date only, but only demand plans with snap shot time strictly equal or before this date/time will be displayed. Site with different Time Zones The selected day with field "History SnapShot Time" is always handled as a local day at all sites. Example: If selecting Friday 2008-12-19 for a product with demand at site A and B then will PipeChain search for demand plans for at this Friday according to site A local time and Friday at site B local time. The Found Snap shot is displayed according to the site time zone. There is a tool tip displaying this the snapshot time in site time zone and user's time zone. This tool tip also display the Flow Model update time. The first demand period date displayed is according to the latest found snap shot time when comparing different sites.

**Supply: New column for one year demand in Total Outflow tab screen Supplier Detail. (SP17)**

A new column "1 Yr Dmd" is added in Total Outflow tab screen Supplier Detail. This new column is updated with accumulated demands from snap shot time and 1 year ahead including backlog quantity Note that the "1 Yr Dmd " is not keeping accumulated quantity for one year if range of flow periods is less then one year.

**WebAccess: Change reception time for whole order (SP10)**

Change of reception time can be done in web screen Outbound Order Detail. A new button "Change Reception Time" is added in this screen. This new button will only be enabled if there is at least one delivery (order line) that is shipped. The reception time will only be changed for these lines that are shipped. There will also be a possibility to only select lines belonging to a specific delivery note id. Choice of reception time and delivery note number is done in a new input dialog that is displayed when pressing the Change Reception" button.

### **Supply: Goods Reception with invoice number (SP12)**

#### ***New Transaction Attributes***

Two new attributes are added into transactions Arrival Registration CS45 and Receiving Advice CS06.

- ArrivalQuantity in CS45. InvoiceNo already exist in CS45 but it has a different function when using it together with ArrivalQuantity
- InvoiceNo in CS06

See XML schema for CS06 and CS45 for the new structure including ArrivalQuantity and InvoiceNo.

#### ***New Processing of CS45 with ArrivalQuantity***

Processing is as before if the attribute ArrivalQuantity is not applied. But there is a new logic when processing if attribute ArrivalQuantity exist in CS45.

Find a delivery:

1. Search for delivery with applied delivery note id and invoice no, if found increase arrival quantity for this delivery otherwise do item 2
2. Search for delivery with applied delivery note id, if found set arrival quantity for this delivery.

#### ***Update quantity and InvoiceNo***

The delivery will be splitted if the CS45 ArrivalQuantity is less than deliver quantity. Increase the delivery quantity if CS45 Arrival quantity exceeds the original delivery quantity. The delivery will be updated with this InvoiceNo.

#### ***New Processing of CS06 with InvoiceNo***

Processing is as before if the attribute InvoiceNo is not applied. InvoiceNo is just stored into the delivery if InvoiceNo is used without using delivery note id as key. But there is a new logic when processing if attributes DeliveryNoteId and InvoiceNo in CS06.

Find a delivery

The logic for finding a delivery is the same as before but it's done in two steps:

1. Search for delivery with applied delivery note id and invoice no, if found use that delivery for goods reception otherwise do item 2
2. Search for delivery with applied delivery note id , use this delivery/these deliveries for goods reception

If no delivery found in step two Pipechain tries to find other delivery according to old logic for processing CS06 with delivery note id.

#### ***Update InvoiceNo***

The Delivery is updated with InvoiceNo if necessary.

### **WebEDI: Mail to customer**

A supplier is able to send an e-mail to the customer, using the e-mail address specified on contact person no 1.

The e-mail function is set up by a number of selected properties.

One property determines if the e-mail function is supposed to be used or not.

Then 3 different properties specifies how the subject line will look like and which data that will be picked up from the system. The correct subject is selected depending on if the mail is sent from an order, order-line or dispatch.

The e-mail function is activated by pressing a green envelope in the overview screen. The envelope is visualized if the property is set and the order has an e-mail address.



**WebEDI: Mail to other business partners**

Emails can be sent to the business partners defined in the order as 'ship to customer' and 'deliver to customer'. The e-mail address can be defined either in the order message or in the PipeChain Java Client.

The emails are automatically sent when confirming and/or when shipping the goods. The setup is defined by selected properties.

What to do activate the new functionality:

Set the property and send/define the e-mail address.

**Supply: Calendar filter (SP15)**

The Calendar screen has a filter

**Supply: New colors and tooltip for Supplier Detail/History Delivery Plan (SP10)**

The tool tip and color for delivery plan is improved to make it possible to see goods in transit

**WebEDI: Price List enhancements and corrections (SP02)**

WebEDI Price List enhancements added. New column on the web page is added and database search is corrected as well.

**Analyzer: Database parameters are moved to the Business object.**

The analyzer database parameters were previously entered via the property file. By moving the parameters to the Business object, it has become possible to save different Businesses analyzer data to different analyzer databases.

This is especially useful in "hosted" environments where it is unacceptable to let different businesses share analyzer data.

A "Check Connection..." button was introduced, which allows the user to check the entered parameters directly.

You must have "Server Administrator" privileges to change the parameters or to see/change the password.

See [Actions after upgraded to PipeChain 4.3.0](#) for actions on this item.

**Supply: Own balance and Demand Export PW25**

See the PipeChain XML transaction documentation "System Interface\_4.3.0\_XML.doc", Gross Demands (PW25)

**Supply: Repeated suggestion generation for customers having PipeChain Supply (SP13)**

It's now possible to set delivery suggestion generation to run independent of data exchanges. In older versions the delivery suggestions has been calculated after each data exchange. Now it's possible to have more frequent data exchange and less frequent calculation of suggestions. If you know that balance is updated once an hour, but deliveries created more or less all the time, you can have data exchange every 10 minutes and calculate delivery suggestions once an hour with a delay after balance update.

**Supply: Added new column for one year demand quantity in screen Supplier Detail/Outflow (SP13)**

A new column "1 Yr Dmd" is added to the left in tab Total Outflow in screen Supplier Detail. This new column is displaying the accumulated demand quantity of one year ahead from snap shot time.

**WebAccess: Print Inventory Chart**

The Inventory Chart popup window now has a Print button

**Supply: Print Inventory Chart (SP11)**

The Inventory Chart dialog now has a Print button.

**Platform: Include headers in print screen (SP11)**

Now is also screen header and selected site included in printed screen from PipeChain windows.

**MACom: Log who started and stopped processor (SP06)**

User name is added to message for a request to stop channel processor. A new message is added when request to starting channel processor. Even this logging contains user name of the user who started the channel processor.

The channel id will also be displayed if a private channel processor is used.

Example:

- Text Id: 10016 MACom Transaction Processor: Channel "CS64" starting. Initiated by "Server Administrator".
- Text Id: 10014 MACom Transaction Processor: Channel "CS64" stopping. Initiated by "Server Administrator".
- Text Id: 10015 MACom Transaction Processor starting. Initiated by "Server Administrator".
- Text Id: 10002 MACom Transaction Processor stopping. Initiated by "Server Administrator".

All activities on MACom channel for starting and stopping sender, receiver and processor are now logged with the user name for user that requested start/stop.

**Supply: Log when a Finished Delivery is deleted manually (SP06)**

Today a message is created in Message Log when a delivery is deleted manually. In the same way now also a message is created when a Finished Delivery is deleted. The message is created for both inbound and outbound deliveries.

Example of message when deleting Finished Inbound Delivery:

Finished Inbound Delivery "14199884" from supplier "1099" "" with product "21023450" "" was deleted by user "Server Administrator"

**WebEDI: Automatic recalculation of reception time (SP07)**

When the supplier isn't allowed to change the reception time, but only the shipment time it's now possible to recalculate the reception time automatically when the shipment time is changed. The lead time in the reception schedule for the supplier (with same id as the supplier has) is used. The new reception time is set to the shipment time + the lead time. The time is counted in days including closed days.

Configuration: Set selected property 41 to -1.

**Supply: More fields open for input when creating new delivery in Inbound Delivery**

**Detail screen (SP17)**

5 new fields are now open for input when creating a new delivery in screen Inbound Delivery Detail, tab Order. These five new fields are:

- Invoice No
- Container No
- Sales Order Id
- Sub Order Id
- (Sales order) Line

**Supply: New columns Min Deliv Qty and Max Deliv Qty added in screen Own Bucket**

**Detail/Inbound Deliveries (SP17)**

The Own Bucket Detail/Inbound Deliveries screen has been completed with two new columns (Min Deliv Qty and Max Deliv Qty).

**Supply: Delivery Plan History (SP12)**

The Delivery Plan History record is not generated on closed days. The Demand Plan history record is, however, still generated and can be seen in the history tab in Supplier Detail.

**Supply: Information logging for too early shipping time (SP17)**

When the shipping time is changed (using PW03 or WebAccess) to be 1 hour or more before the planned shipping time and the delivery type id Purchase Order, the text "Too early shipment time." is logged as below:

Delivery Shipped With Changes: The delivery with Product Id = "11158272", "", Quantity "130", ReceiptTime "2008-08-26 14:00", Supplier Id = "1100", "" and Delivery Id = "vpwtsde14200657" was shipped by MACom Common Processor. Delivery Quantity was changed from 130 to 100. Too early shipment time. Shipment Time was changed from 2008-08-25 12:00 to 2008-08-24 12:00. This message has Text Id: 110206 and are used for all changes of delivery during Confirmation and Shipment. But if the shipment is done in advance then the text "Too early shipment time" will be included.

**Supply: Managed Inventory logging when changed (SP17)**

Below are the logged messages for changing the 'Supplier Managed Inventory' from SMI to non-SMI:

Site id "1622", "Skövde": Supplier id "1099", "" (WebUser sa) wants to change inventory responsible for product id "20412200", "" from SMI to non-SMI. Supplier id "1099", "": Customer id "510604", "" (User sa) has accepted a request to change inventory responsible for product id "20412200", "" from SMI to non-SMI.

Below are the logged messages for changing the 'Supplier Managed Inventory' from non-SMI to SMI:

Supplier id "1099", "": Customer id "510604", "" (User sa) wants to change inventory responsible for product id "1067254", "" from non-SMI to SMI. Site id "1622", "Skövde": Supplier id "1099", "" (WebUser sa) has accepted a request to change inventory responsible for product id "1067254", "" from non-SMI to SMI.

**Supply: Own Bucket Detail / Multiline Notes text (SP15)**

The text field shown on the Notes tab is now presented as a HTML string with multiline possibility. Bold text tags, image tags etc can be used for richer text presentation.

Here is how to show an image in the text field:

```

```

This feature is used in the following places in the Supply client:

1. Own Bucket Detail/Notes
2. Inbound Delivery Detail/Notes
3. Inbound Suggestion Detail/Notes

**MACom: Added timeout value 30 sec for email server connections (SP18)**

Timeout properties are now used for channels with communication type EMail. This affects both Email sender (smtp) and EMail receiver (POP3).

From now on is properties mail.smtp.connectiontimeout and mail.smtp.timeout set to 30 sec. Before was the timeout value infinity. Hopefully will this prevent mail channel from "hanging eternal" when getting problem with connection to mail server.

**Supply: Filter optimization for flow models (SP10)**

The filter optimization functionality has been activated on own flow models (CS21). If optimization is activated, on fragmentation only fragments where there is a corresponding product definition will be saved and created as fragments.

**Supply: Site in Supplier / WebUsers**

The WebUsers tab in screens for Supplier and Customer now contains site information. The tab also lists WebUsers from all sites the current user is privileged to see.

**WebEDI: Purchase Order Report-Shipment time (SP22)**

The shipment time of the order and order lines is added to the purchase order report.

**Supply: New columns for Backlog and Transit Quantity in demand history screen (SP24)**

Two new columns are added for displaying Backlog and Transit Quantity. These values were earlier displayed in the first cell in a demand data line.

**Supply: New attributes for Analyzer in Own Bucket Detail screen (SP25)**

Three new attributes "Volume Value", "Volume" and "Standard Cost" are added into the new tab "Analyzer Information". These fields are open for editing and can also be populated with transaction CS08 Product Definition. A new element "AnalyzerInformation" with attributes "VolumeValue", "Volume" and "StandardCost" are added to the Product Definition transaction.

**Supply: Repeated suggestion generation for customers having PipeChain Supply (SP13)**

It's now possible to set delivery suggestion generation to run independent of data exchanges. In older versions the delivery suggestions have been calculated after each data exchange. Now it's possible to have more frequent data exchange and less frequent calculation of suggestions. If you know that balance is updated once an hour, but deliveries created more or less all the time, you can have data exchange every 10 minutes and calculate delivery suggestions once an hour with a delay after balance update.

**Platform: Added business, site info and selected tab title in list printing (SP24)**

The list printing is extended with information about business name, business id, site name, site id and title of selected tab (optional) This affects printing selected by File/Print../Print a list of all items in table

**Supply: Add product id in message shown when deleting delivery (SP06)**

Product id and product variant is added in message display in Message Log when a delivery is deleted manually. Example:

Inbound Delivery "vpwtsde14199886" from supplier "1099" "" with product "21023450" "" was deleted by user "Server Administrator". Status was "Confirmed"

**Supply: Check of Deliver Agreement when processing CS06 (SP06)**

If no delivery found at all for actual product and supplier when processing transaction CS06 Receiving Advice a delivery is created. But this delivery is created even if there is no delivery agreement.

This is now changed so that a check will be done if a delivery agreement exists for product and supplier. If delivery agreement does not exist the CS06 transaction will be processed error and a message will be created in the Message Log.

**Supply: WebAccess Partners list sorting (SP17)**

The list of the Partners in the WebAccess can now be sorted either by the partner name (default) or the partner Id. Use the client application/Selected Properties screen to manage that. The following Property Value Category used for that:

'Order partners (suppliers/customers) by name in partner list in WebAccess. Use business key for non-default setting.' Create a new record with a specific business key for the business that needs to be sorted in a different way. The setting value must be set to false for sorting by partner Id.

### **Supply: Updatable Invoice No and Container No in screen Inbound Delivery detail tab Order (SP17)**

The fields Invoice No and Container No are now opened for editing in the screen Inbound Delivery detail tab Order. The user must have at least Site Administrator privilege to be allowed to edit these fields.

### **Supply: Possible to rename Sales Order Id and Sub Order ID and make these field editable (SP17)**

There exist 4 properties to rename Sales order Id and Sub order Id in screen Inbound Delivery Detail:

- se.masystem.pipeline.inbounddelivery.salesorderid.longlabel
- se.masystem.pipeline.inbounddelivery.suborderid.longlabel
- se.masystem.pipeline.inbounddelivery.salesorderid.shortlabel
- se.masystem.pipeline.inbounddelivery.suborderid.shortlabel

From now on is these fields open for input in screen Inbound Delivery Detail tab Order if the "longlabel" properties are set

### **WebEDI: Price List Changes (SP04)**

WebEDI related news

1. if T0015 & T0172 exist T0015 -> Product/ProductId T0172 -> SupplierProduct/ProductId
2. if only T0172 exist T0172 -> Product/ProductId T0172 -> SupplierProduct/ProductId.
3. Reading information from product/delivery agreement

### **Supply: Reception registration possible with blank supplier id (SP10)**

If an inbound delivery is identified with PipeChain Order Id it's now allowed (but not recommended) to have a blank supplier id.

### **Supply: Keep product when moving between History tab and Total Outflow tab (SP17)**

From now on is the product selected kept when moving between History tab and Total Outflow tab. This means that the users don't have to select product each time switching between these tabs. Even the snap shot time is kept when moving between History tab and Total Outflow tab.

### **LoadPlanner: Load Capacity is always presented with 3 decimals (SP16)**

The change affects the screens; Transport Unit Detail, Delivery Unit Detail and Shipment Detail/Load Capacity

### **Supply: New Product Certificate (SP20)**

The PipeChain Supply is signed with a new certificate on 2009-02-03. On the PipeChain server the contents of the directory ..\jre\lib\ext\ must be upgraded.

## **Corrections**

---

### **Supply: Namespace in XML messages (SP07)**

Before this change was all elements according to xsd-schema belonging to the target name space (using ElementFormDefault="qualified") , therefore it was allowed to use element names with a name space prefix, like <pipechain:Data/> according to schema, but PipeChain was only able to process transaction without name space prefix, like <Data/> , only default name space was supported for processing. The solution was to change schema so that only the root element "Message" belong to target name space, and all other element is outside any name space (using

ElementFormDefault="unqualified". But in this case must the root element "Message" have a name space prefix, like <pipechain:Message>.

Note that PipeChain can always read inbound transactions with both name space prefix and not:

- <Message> Ok
- <pipechain:Message> Ok

Outbound transaction is created differently if using transaction release number 4.3.0 (Set up in screen MACom Channel Transaction Type)

- 4.2.0 and earlier releases: <Message>
- 4.3.0: <pipechain:Message>

### **PipeChain 4.2.0 with service pack 07 or higher but not using PipeChain 4.3.0**

If using PipeChain 4.2.0 with service pack 07 or higher but not using PipeChain 4.3.0 there was a more primitive solution for handling incoming transactions with different name space prefix.

In this solution was a property se.masystem.macom.namespaceaware used for how name space prefix is handles. If the property is set to false then can only transactions like <Message> be read. If the property was set to true then could both <Message> and <pipechain:Message> be read, but then should the transaction include correct name space declarations. Empty name space declarations like xmlns="" or xmlns:pipechian="" is not allowed.

The property se.masystem.macom.namespaceaware still exist in PipeChain 4.3.0 but does not affect if <Message> or <pipechain:Message> could be read. It has default value false, if setting it to true will use a more correct reading of transaction but in this case all name space declarations must be correct.

See PipeChain Interface document and PipeChain schema for more info about this change

### **MACom: Style sheets (xsl-files) are now updated to support 4.3.0 transactions**

Transaction with release number 4.3.0 and higher are designed with having only the Message element in the target name space. The message element will then have a name space prefix. Event, NotificationMails and other transaction using style sheets are now handled in a correct way when converting xml to html.

See [Actions after upgraded to PipeChain 4.3.0](#) for actions on this item.

### **Supply: Updated ConfirmedQty2 after manual changed quantity in Inbound Delivery Detail (SP17)**

The field ConfirmedQty2 is now updated when the user updates the quantity in inbound delivery detail if the 'Send Delivery Suggestion' strategy is of type 'Automatic Confirmation'. The 'Send Delivery Suggestion' strategy is defined in the Own Site screen and can be overridden in the Partner Agreement and Delivery Agreement screens.

### **Supply: Corrections in Goods reception transaction (SP10)**

The SupplierAdressid was in some case required, this is corrected. The ReceivingAdviceRowNo was in some cases required, this is corrected. If the user has set up that the goods reception is supposed to be set up as a GRA, the ReceivingAdviceRowNo can be set by system if it is omitted. The interval for automatic numbering of ReceivingAdviceRowNo is started with 1001.

### **Supply: Inbound Partner Agreement Correction (SP05)**

An error in the update function in the Inbound Partner Agreement screen has been corrected.

**Supply: CS34 Delivery Suggestion Request not functioning (SP06)**

CS34 Delivery Suggestion Request was not functioning when transaction was per business and site and using element "AllSuppliers" to invoke delivery suggestion generation for all suppliers belonging to a site. This is now corrected.

Also corrected error "null-exception" when Strategy for Generating Suggestion was off in Supplier Detail/Inbound Delivery Suggestions Parameters.

**Supply: Incorrect Checkbox "Critical Time" in delivery agreement (SP06)**

The checkbox "Critical Time" in Delivery Agreement Parameter Group now controls if the group's critical time should override setting in the agreement. Previously, it controlled the setting of the agreements "Use critical time" checkbox directly. The agreement's checkbox will now be checked if the groups checkbox is checked and the group's critical time is larger than 0. The agreement's checkbox will now be checked if the groups checkbox is checked and the group's critical time is 0. The checkbox isn't changed if the groups checkbox is not checked.

**Supply: Thread deadlock problem (SP10)**

A thread deadlock problem, when closing a database connection, was fixed. This used to be a problem with Messages' database connection.

**Supply: Expect Despatch Advise and Expect Receipt Advise were reset (SP17)**

Every data exchange the check boxes for Expect Despatch Advise and Expect Receipt Advise in the where unchecked. This resulted in automatic receiving if the balance was increased. The error is now corrected.

**Platform: Can't enter Domain Configuration in User Detail (SP06)**

The Domain Configuration browser in User Detail has been corrected. It didn't show any values. The errors have been corrected.

Note that to get the windows authentication to work you have to add a bin directory with a file called jaas.conf in the bin directory (..bin\bin\jaas.conf). The file jaas.conf can be downloaded from our FTP site ([ftp://ftp.pipechain.com/pub/PipeChain/4.2.0/SP06\\_20081201/bin/](ftp://ftp.pipechain.com/pub/PipeChain/4.2.0/SP06_20081201/bin/))

**FP: Error corrected: when scheduling with "Find First Possible Shipping Day" and user has his own "Date Format". (SP07)**

If a user had his own "Date Format", the scheduling operation "Find First Possible Shipping Day" would fail due to error in Date Format. The error was corrected by transferring the "first possible" day in a user independent data format.

**FP: New combination of "Find First Possible Shipping Date" and "Display All Shortages" (SP07)**

The scheduling operation "Find First Possible Shipping Date" returns a possible date. Previously, the planner could choose to either schedule to that date or to cancel the operation. Now, the planner can also choose to "Display All Shortages" up until the returned date.

**Shipping Documents: Related invoice in Remittans Advice screen (SP08)**

If a Remittance Advice Line refers to a Self-bill Invoice Line, then any matched Invoice Line is displayed in additional columns labeled 'Related Invoice ...'. The match status is also shown. Please note that one match can include many Self-bill Invoice Lines and many Invoice Lines. There will be one Remittance Advice Line for every relation.

If a Remittance Advice Line refers to a Self-bill Invoice (head), then any Invoice (head) found through matched lines will be displayed in the 'Related...' columns. Since the Self-bill Invoice and the related

Invoice may have different match statuses, both of them are shown with the Self-bill's to the left.

**MACom: New property for XML name space aware (SP09)**

From SP07 can PipeChain handle XML documents with name space prefix according to "unqualified schemas", but there is problem with empty namespace declarations like xmlns="" in the message element. Therefore has a new property "se.masystem.macom.namespaceaware " with value true/false where false is default. This new property controls if XML should be created as namespace aware document or not. This property should be set to true if using transactions with name space prefix in the Message element like <pipechain:Message xmlns:pipechain="www.pipech.....

**Supply: Error in inventory chart corrected**

Initial duration was wrong in the continuous chart in the inventory chart dialog if there was a delivery before the opening time. The error is corrected now.

**Supply: Updating Inbound Delivery Detail (SP11)**

Some data, as example sales order id, was scratched when the inbound delivery was updated. The error is fixed

**WebEdi: Invoice function when delivered quantity is 0 (SP12)**

The user is able to set the delivered quantity to 0.

When he does the dispatch row is not visualized in the invoice screen, invoice printout ore reported to the ERP system.

**Supply: Reading Taxes from product definition or delivery agreement transaction (SP12)**

The supplier and customer taxes keyword are corrected

**Supply: CS80 Invoice message corrected**

The InvoiceTotals/Taxtotal/TaxRate is in percent as InvoiceLine/TaxRate already was.

**Supply: Transaction conflict in CS02 with balance update and SplitOrderLineOnPartialShipment (SP13)**

If an order response (CS02) has both balance update and SplitOrderLineOnPartialShipment=true the application gets transaction conflict loop with itself and fails.

**Supply: Order status update (SP13)**

The outbound order didn't get status received even if all lines were received, it got stuck in status Shipped with no lines left on it. The error is corrected.

**Supply: Corrected error on data exchange of reception registrations (SP13.2)**

One error is corrected for data exchange of reception registrations. This error could also occur when doing reception registration at a Customer WebAccess

**Analyzer: FlowPeriodDay SQL may fail if multiple FlowPeriod records with the same StartDate (SP14)**

The error was corrected (in 4.1.0 and 4.2.0) by selecting ONE of these records.

**Supply: Corrected error on data exchange of reception registrations (SP15)**

One error is corrected for data exchange of reception registrations. This error could also occur when doing reception registration at a Customer WebAccess

Inserting a new delivery is done by pressing "New" button in this screen. Note that you must be Site Administrators to insert a new delivery.

**MACom: Accepts fractional seconds when parsing XML dates (SP15)**

Using the XML format for dates including fractional seconds is now accepted.



**Supply: New Messages when supplier meter becomes blue (SP06)**

Added 3 new messages when supplier duration meter becomes blue:

- Text Id:120074 The duration meter background for supplier "27384", "", bucket "21063845", "" has become blue.
- Text Id:120075 The duration meter symbol for supplier "27384", "", bucket "21063845", "" has become blue.
- Text Id:120076 The duration meter triangle for supplier "27384", "", bucket "21063845", "" has become blue.

**Supply: Inbound Delivery performance (SP17)**

The very poor performance, when sorting the Inbound Delivery screen by Urgency, was fixed.

**MACom: Could not change polling interval on a FTP channel (SP17)**

The polling interval entered in screen Channel Detail was not used, instead was the polling interval always 60s. This is now corrected so that entered polling interval is used for ftp channels

**WebEDI: Error when creating invoice (SP18)**

If more than one order is selected for invoicing and it's not allowed to have more than one order in each invoice the action failed.

This error is corrected now.

**Analyzer: Groups use business key in stead of Site key (SP18)**

When Analyzer groups were connected to PipeChain groups in version 4.1.0, Analyzer groups were given the same "keys" as PipeChain groups, GroupId + SiteKey. At this time this was not an issue. When the new Analyzer dimension "Business Node with Sites" was introduced in 4.2.0, this dimension would find site specific groups, probably in a greater number than the user would expect (up to "no of groups \* no of sites").

Thus, the following changes were applied:

Business Groups are saved with "keys" GroupId + BizKey (this requires no database change because the old SiteKey is used for this new purpose).

Product Groups are also saved with "keys" GroupId + BizKey. This gives "symmetry" as well as ability to handle a "Product with Sites" dimension in the future.

Businesses (and Products) find their corresponding group by SiteKey/BizKey matching.

In PipeChain, the checkbox for Analyzer groups ("Only Unique Members") may only be set for one single "Group Id" per business.

The "Others" default groups are no longer added to the PipeChain database (actually they are auto-removed). If needed, they are added directly to the Analyzer database. If a customer has run PipeChain version 4.1.0 or 4.2.0 SP00-SP17, there will be superfluous groups in the Analyzer database, as well as Products/Businesses pointing to them.

This is handled by running a SQL-script provided by PipeChain AB. Note that there will be no actual problem unless groups are used in conjunction with the "Business Node with Sites" dimension.

**Supply: Corrected database script for upgrade and new installation (SP19)**

There some errors in database script for upgrade and new installation for table Invoice and SelectedProperties SelectedProperties.settings is extended from 35 characters to 200 characters. Invoice.PaymentAccountType1, Invoice.PaymentAccountNo1, Invoice.PaymentAccountType2 and Invoice.PaymentAccountNo2 should always be 40 characters If a customer has run PipeChain version 4.1.0 or 4.2.0 SP00-SP17, there will be superfluous groups in the Analyzer database, as well as Products/Businesses pointing to them. This is handled by running a SQL-script provided by PipeChain AB. Note that there will be no actual problem unless groups are used in conjunction with the "Business Node with Sites" dimension.

**Supply: Correction in the background job Automatic Receipt (SP19)**

The deliveries are handled depending on if the process configuration for if despatch advice is expected.

If the message is expected deliveries that have a status from shipped is handled otherwise deliveries that have a status from confirmed is handled

**Supply: Correction when handling Partner Agreement (SP19)**

The information for order lines was not shown if the Partner Agreement was newly created. The error is corrected.

A work around until a corrected version is installed;

Update the Expect despatch Advice field in the Process Configuration folder at the partner agreement. Save the modification.

**MACom: SOAP Message Keeper (SP20)**

The purpose of the newly created component Message Keeper is to keep track of the SOAP messages that are successfully saved in the database. This information is buffered on the Tomcat side to guarantee the highest possible performance. When a new SOAP message arrives, the system first checks whether we have already received that message before. If so a "OK 200" reply is directly sent back to the caller without saving that message in the database since it is not a new one. The life time of the registered messages in the Message Keeper is set to 24h. Note that the message keeper is reset on restarting the web server (Tomcat)!

**Supply: Missing Process Config (SP20)**

When the partner agreement transaction (CS44) was used the Process Configuration record was not created. This error has now been corrected.

**Analyzer: Supplier and Customer groups are saved per Business (SP20)**

The new dimension "Business Node With Sites" was not presented in a useful way because the Supplier/Customer groups were saved per site. In a Pivot Table each "Group X Site" would show up, instead of just the groups.

This was corrected by

- defining that Suppliers/Customers are saved per Business in the Analyzer (for the time being, saving the BizKey in column SiteKey).
- adding conditions for groups and members in PipeChain Supply. If a group "Has Unique Members" (ie is used by Analyzer), its members must be unique in the whole business, and so must the Group Id.
- corresponding changes when groups, suppliers and customers are saved to the Analyzer
- changing the script that updates Analyzer from 4.0.0 to 4.1.0, as well as the instructions
- adding a script for "cleaning" Analyzer databases that have been run using PipeChain version 4.1.0 or 4.2.0 < SP20.

**WebShop: Product Search Dimensions (SP21)**

When searching for a product in the WebShop using the dimensions, only the numeric values of the Length, Width and Height are included in the search result.

**Supply: Product Attributes Length Width and Height (SP22)**

The product attributes Length Width and Height are now validated as numeric values in the client application and the CS08 (product definition transaction).

If the CS08 attribute value is not numeric, they system converts it to numeric and a warning log message is created as below:

TSA=2009-03-09 20:28:18.023 CET, TSS=2009-03-10 02:28:18.023 ICT, LGT=USER

SSN=MACom Common Processor, THR=MACom Common Processor, SRC=MessageLog

Product "Jna\_8" "" Attribute Width has a non numeric value. The old value "500/300/200" is converted to "500"

**Supply: Init Duration and Resulting Duration was not calculated correctly when several deliveries have the same receipt time. (SP22)**

Init Duration and Resulting Duration was not calculated correctly when several deliveries have the same receipt time.

**Supply: SOAP Message Keeper using Sender information (SP23)**

In this version the SOAP Message Keeper is enhanced to identify messages using not only the External

Message Number but even Sender Id and Sender address Id. If the External Message Number is missing the message is not saved in the message keeper.

**Analyzer: Suppliers/Customers in the Analyzer was not updated after the Partner Agreement was removed**

The update of Suppliers/Customers in the PipeChain Analyzer was driven entirely by changes in Partner Agreements, but some changes (group membership and supplier/customer name) should always be updated. This is now done automatically by the Analyzer Poll background job.

**Supply: Deliveries with too large quantities was created just before closing days (SP24)**

A Deliveries with too large quantities was created just before closing days. The internal transport list should always include one transport after planning horizon, this was not the case when this transport was removed during cancel for closed day. This is now corrected.

**Supply: No warning on shipment time in Inbound Delivery Overview (SP25)**

There was no warning (yellow color) on shipment time when the shipment was not done a shipment time was passed. This because the flag ExpectDesAdv was not updated correctly.

**Supply: Delievries with too large quantites was created just before closing days (SP25)**

There must always be one transport after planning margin; this transport is only use internally to calculate the quantity for last delivery inside planning margin. In some cases was this transport removed.

It was removed because there was another transport with the same reception time but earlier shipment time. From now is always the transport with shortest transport time kept when deleting transports with the same transport reception time. This will make sure that there is always created a transport time with shipment time after planning margin.

**MACom: Files with with byte order mark now handled for input files.**

A file with Unicode encoding can have a byte order mark (BOM) at the beginning of the file. These 1 - 4 bytes was not handled

by PipeChain MACom, instead there was an error message "Content is not allowed in prolog" when trying to receive a Unicode file with a BOM. From now on is the BOM read and used to determine what kind of Unicode that is used. Following Unicode is determined:

UTF-32BE (Big Endian)  
 UTF-32LE (Little Endian)  
 UTF-16BE (Big Endian)  
 UTF-16LE (Little Endian)  
 UTF-8

This change is affecting received files with PipeChain MACom file channel, SOAP client and FileToEmail client.

The priority for getting character encoding for a File channel is:

1. Use encoding from the BOM found in file.
2. Use encoding from field "Reading encoding" from file channel parameters.
3. Use encoding from property se.masystem.macom.characterencoding
4. Use encoding ISO-8859-1

**MACom: Binary files was not handled correctly by FTP channel**

Binary files (like zip-files) was corrupt when getting them with FTP This is now corrected.

**Platform: Business Restricted Users can't see users from other businesses any more**

Prior to this version users restricted to one business could see user without restriction. This error has been corrected.

**MACom: Some attributes in the Notification mail should not always be displayed.**

Some attributes are not always used and should not be displayed in a notification mail if they are not populated. These attributes are Product Id, Product Variant, Product Name, Partner Product id, Partner Product Variant, Partner Product Name, Delivery Quantity and Price. These attributes will from now on only be displayed if the product id exists in transaction.

Some other minor errors where also corrected in style sheets.