

PIPECHAIN TECH PAPER ACADEMY:

NETWORK APPLICATIONS – EDI AND SUPPORTING TOOLS FOR THE AUTOMOTIVE INDUSTRY

As a supplier to the automotive industry, there are certain EDI requirements that must be met.

1. You will need ability to receive and interpret a delivery schedule. Preferably you should also be able to break the OEM requirements down to components and forward your requirements to your suppliers.
2. You will need the ability to label all goods with various OEM labels and send an ASN (advanced shipping note) with the corresponding information about the goods.
3. You will also need the ability to receive a Self-Billing Invoice or send an e-invoice and manage to get that information into your Accounts Receivable.

It's important that you fulfill those requirements from day one of your operation. PipeChain Networks, together with ERP's around the world, can supply a solution for the above different set-ups, where you can choose which is the best one for you.



PipeChain Network Applications supports your ERP with:

- Dashboard overview
- Delivery Schedule Management
- Labeling and ASN Management
- Securing outbound deliveries with handheld devices
- Full control of VIA deliveries (e.g. surface treatment)
- Keep track of OEM owned package
- Transport booking

CONTACT US: INFO@PIPECHAIN.COM +46 46 32 90 30
OFFICES: EUROPE, UNITED STATES, ASIA

Pipe Chain[®]
RELEASING SUPPLY CHAIN POWER

GOOD MORNING OVERVIEW - DASHBOARD

Our solution has a full overview in the Dashboard, which is an important part of the cloud service. The Dashboard gives a complete overview of the transactions and logistic flows. This gives our customers control and overview that leads to time savings for customer service, logistics and the IT department.



DELIVERY SCHEDULES - SCHEDULE

Statistics/management

Forecast accuracy

Measure the quality on the forecast information from your customers. How well does the order information from the previous forecast follow the new? How much do the call offs fluctuate under the forecast period? You can see all deviations per product item, or average per customer based on all items.

Planning tool

In Network Applications Schedule you can also choose to review requirements, accumulated or for a choice of consignee(s) for any given period to get an exact status on the delivery situation for the chosen period.

Forecast comparison

Another difficulty, is that without any historic figures, it is almost impossible to react to fluctuations in requirements. Increase in requirements can lead to under delivery and decrease to excessive stock of inbound components and raw material.

Goods in transit

Schedule management module interacts with the delivery management module for labeling and outbound ASN to keep track of goods in transit. Quantities in transit will be compared with possible backorder information to get an actual figure.

Backtrack information in a few seconds

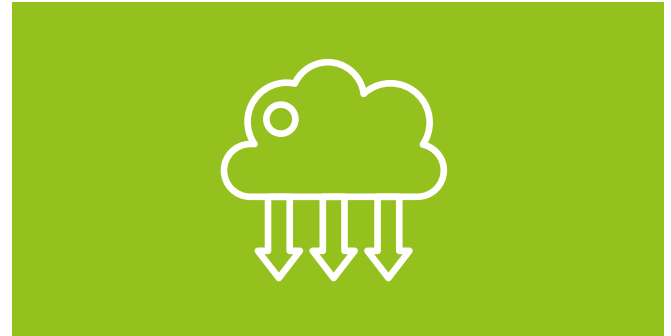
Get track of old information in delivery schedules in seconds. This is an action that normally takes hours and needs interaction between the IT department and logistics personnel.

ASN AND LABELING - DELIVERY

ASN (Advanced Shipping Note) and labeling is an important part of traceability and automated goods reception, and errors are often a costly surprise to the supplier. In addition, it may have a negative impact on your supplier rating. The basic demand from an OEM brand is the ability to receive and interpret delivery order/order response, create and transmit an ASN with corresponding labels and also to send an invoice. These electronic documents and all other can be handled by PipeChain Networks' products or services, with or without integration with your ERP.

Network Applications Delivery is a cloud-based solution that supports the ERP to manage ASN creation and print labels. The system manages all packing and connected labels with all data needed from the start.

This helps our customers to save time and money and supports the whole process with a high quality, resulting in better business with the customers.



Label printing

The label printing support virtual, laser and thermal transfer printers. All known labels can be inserted in system via our document sets. This saves time in our projects.

Just in Time and Just in Sequence

Network Applications Delivery also supports JIT and JIS flows, with packing, ASN and labels for this critical process.

SECURE OUTBOUND DELIVERIES - PACKMAN

Network Applications Packman secures the outbound delivery. A big problem for the OEM manufacturer is bad packing from suppliers. If the ASN doesn't match the label or expectations, the OEM will not be able to receipt the goods.

With Packman, you secure the outbound delivery by matching internal production labels with OEM labels, to make sure that everything matches. The application supports a good relationship with the OEM supplier assurance team.

VIA DELIVERIES - VIA

Network Applications VIA saves time and transportation costs. This application generates a new order based on the OEM order, with the parts that can be delivered directly from supplier, e.g. external warehouse or paint shop.

CONNECTIVITY

The solution supports all kind of connections to ERP. Text file, database or API, just choose the most cost-effective way that suites your ERP system.

